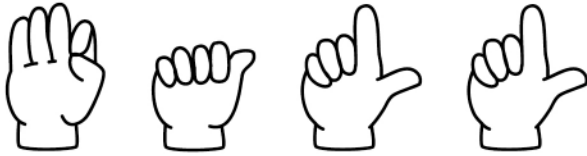


# fall

*fall*

Sign then write:



--	--	--	--

Circle the sight word:

kind    fall    show  
cut    fall    fall  
fall    draw

f	e	u	d	f
a	a	i	n	a
l	i	l	i	l
l	f	a	l	l

*How many times  
did you find the word? \_\_\_\_\_*

How many syllables?

Clap it out!



1	2	3
---	---	---

Unscramble:

# allf

--	--	--	--

*Be careful not to fall on the sidewalk!*