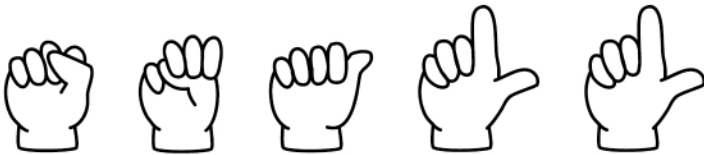


small

small

Sign then write:



--	--	--	--	--

Circle the sight word:

small drink *shall*
carry *small* small
Light small

s	n	s	r	a	i
m	r	m	a	s	c
a	d	a	b	m	e
l	a	l	s	a	w
l	a	l	r	l	c
s	m	a	l	l	v

*How many times
did you find the word? _____*

How many syllables?

Clap it out!



Unscramble:

alsml

--	--	--	--	--

The bunny was very small.