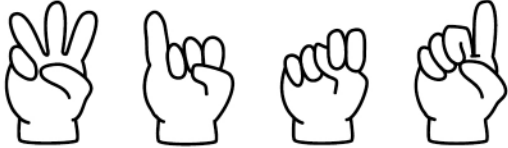


# wind

wind

Sign then write:



--	--	--	--

Circle the sight word:

wood wind wood  
wood wind wood  
WiNd wind

w	u	e	w	x
c	i	o	i	t
h	r	n	n	a
w	i	n	d	e

How many times  
did you find the word? \_\_\_\_\_

How many syllables?

Clap it out!



Unscramble:

# ndiw

--	--	--	--

The wind blew strong last night.