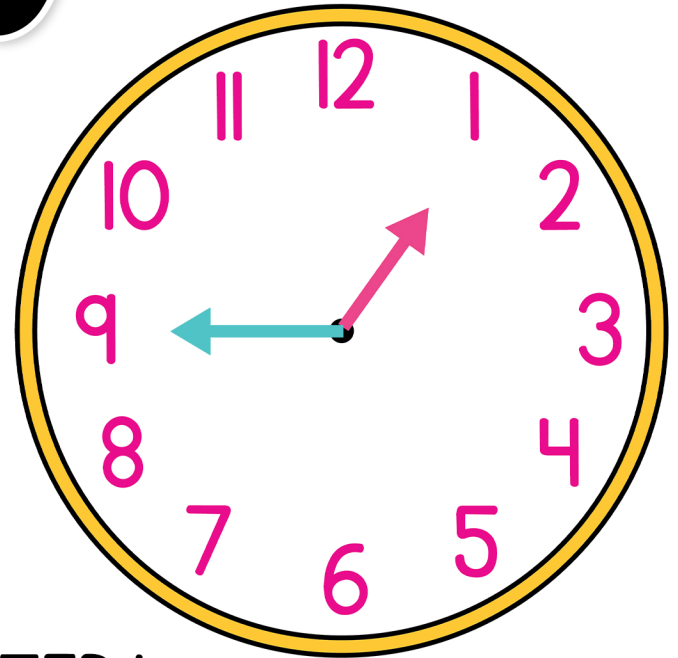
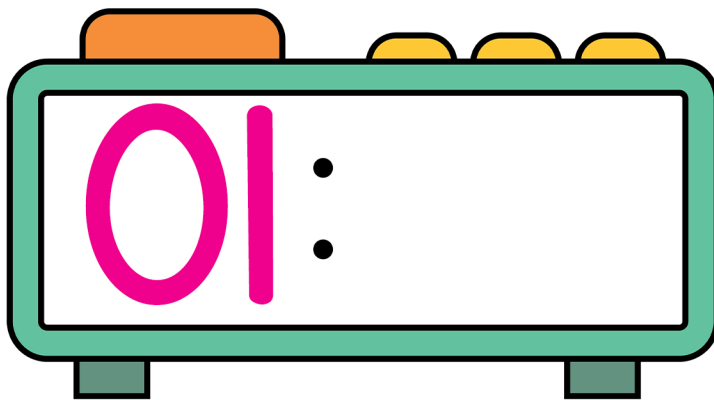


# TELLING TIME



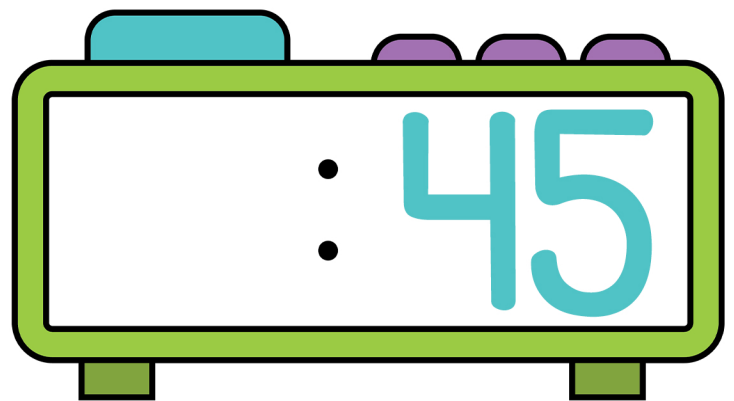
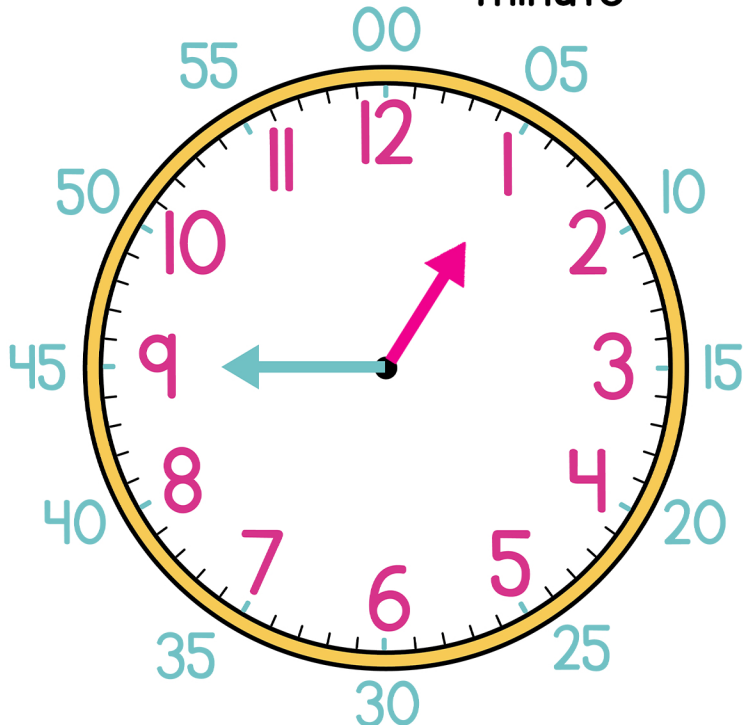
THE SHORT HAND TELLS THE HOUR



## STEP 1:

Look at the short hand. This is the **hour** hand. Write the number it is on or has just passed.

THE LONG HAND TELLS THE MINUTE



## STEP 2:

Look at the long hand. This is the **minute** hand. Start at 00 and count by five's until you get to the minute hand.