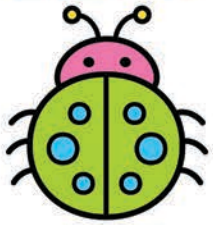


# SHORT ū WORDS



bug



run

closed	digraphs	blends
cub	chug	blush
tub	church	club
bud	knuckle	slug
mud	shovel	brush
sud	shut	grub
bug	double	smudge
dug	touch	smug
hug	young	dust
jug	couple	tusk
mug	nervous	mustard
pug		
rug		
tug		
bun		
nun		
run		
sun		
cup		
pup		
bus		
cut		
nut		
tux		