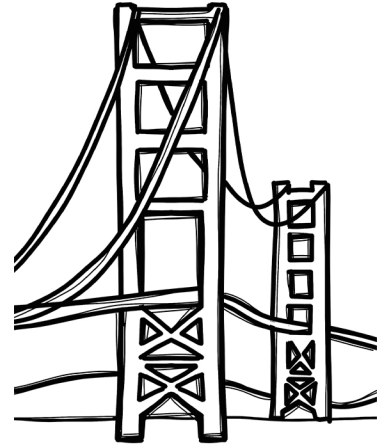


The Golden Gate Bridge is one of the most famous landmarks in the world. It is located in San Francisco, California. This bridge connects the city of San Francisco to Marin County. The bridge spans over the Golden Gate Strait, which is a mile-wide channel of water that connects the San Francisco Bay to the Pacific Ocean.

The idea for the Golden Gate Bridge started in the early 20th century. Before the bridge was built, people had to take a ferry to get across the bay. This was not always easy or quick. A man named Joseph Strauss, who was an engineer, thought that a bridge could be built to make travel easier.



Construction of the Golden Gate Bridge began in 1933. It took over four years to build and was completed in 1937. Many people worked hard to build the bridge, including engineers, architects, and construction workers. It was a difficult job because of the strong winds and foggy weather in the area.

The Golden Gate Bridge is 1.7 miles long and has two towers that are 746 feet high. These towers hold up the bridge's cables, which are very strong and help support the weight of the bridge and the cars that drive on it. The bridge is painted a special color called International Orange, which helps it be visible in the fog.

One of the most interesting things about the Golden Gate Bridge is its design. It is a suspension bridge, meaning the roadway hangs from cables strung between the towers. This design allows the bridge to be very strong and flexible. It can bend and sway with the wind and the movement of the earth.

The Golden Gate Bridge is not only important for transportation, but it is also a popular tourist attraction. Many people visit San Francisco just to see the bridge. They can walk or bike across it and enjoy the beautiful views of the city and the bay.

Over the years, the Golden Gate Bridge has become a symbol of San Francisco. It has appeared in many movies, TV shows, and photographs. People from all over the world recognize its unique look and bright color.

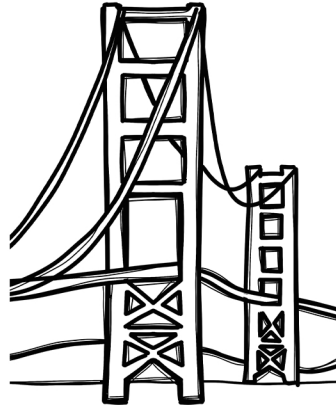
It is very important to keep the Golden Gate Bridge in good condition. Workers regularly check and repair the bridge to ensure its safety for everyone who uses it. This includes painting the bridge to protect it from rust and fixing any worn-out parts.

The Golden Gate Bridge is a marvel of engineering and design. It has stood the test of time and remains a vital part of San Francisco. Whether you drive across it, walk along its pathways, or simply admire it from afar, the Golden Gate Bridge is remarkable.

Circle the correct answer.

1. What is the primary purpose of the Golden Gate Bridge?

- a. To be a tourist attraction
- b. To connect San Francisco to Marin County
- c. To appear in movies and TV shows
- d. To provide a place for people to walk and bike



2. What color is the Golden Gate Bridge painted?

- a. Robin Red
- b. Sky Blue
- c. International Orange
- d. Inspector Green

What I learned:

Who was the engineer that had the idea to build the Golden Gate Bridge?



Why is it important to regularly check and repair the Golden Gate Bridge?

Circle the correct answer.

1. The Golden Gate Bridge was completed in 1937.

- a. True
- b. False

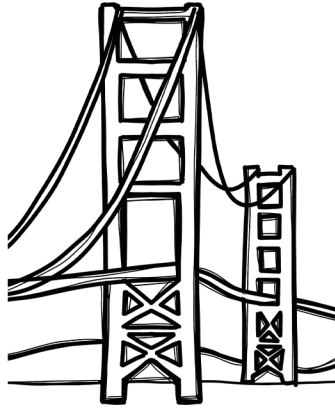
2. The Golden Gate Bridge is a type of suspension bridge.

- a. True
- b. False

Circle the correct answer.

1. What is the primary purpose of the Golden Gate Bridge?

- a. To be a tourist attraction
- b. To connect San Francisco to Marin County
- c. To appear in movies and TV shows
- d. To provide a place for people to walk and bike



2. What color is the Golden Gate Bridge painted?

- a. Robin Red
- b. Sky Blue
- c. International Orange
- d. Inspector Green

What I learned:

---

---

---

---

Who was the engineer that had the idea to build the Golden Gate Bridge?

Joseph Strauss



Why is it important to regularly check and repair the Golden Gate Bridge?

To ensure it is safe for everyone using it

Circle the correct answer.

1. The Golden Gate Bridge was completed in 1937.

- a. True
- b. False

2. The Golden Gate Bridge is a type of suspension bridge.

- a. True
- b. False