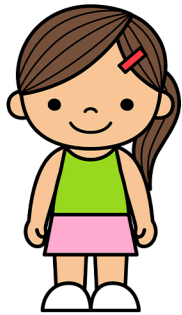


Possessive Nouns

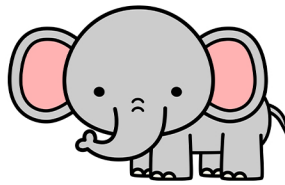
POSSESSIVE NOUNS



sister's

SUPERSTARWORKSHEETS.COM

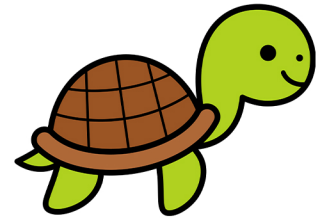
POSSESSIVE NOUNS



elephant's

SUPERSTARWORKSHEETS.COM

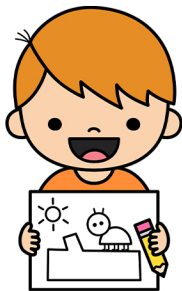
POSSESSIVE NOUNS



turtle's

SUPERSTARWORKSHEETS.COM

SUPERSTARWORKSHEETS.COM



brother's

SUPERSTARWORKSHEETS.COM

POSSESSIVE NOUNS



school's

SUPERSTARWORKSHEETS.COM

POSSESSIVE NOUNS



farmer's

SUPERSTARWORKSHEETS.COM

SUPERSTARWORKSHEETS.COM



doctor's

SUPERSTARWORKSHEETS.COM

POSSESSIVE NOUNS



bear's

SUPERSTARWORKSHEETS.COM

POSSESSIVE NOUNS



chef's

SUPERSTARWORKSHEETS.COM

SUPERSTARWORKSHEETS.COM



lion's

SUPERSTARWORKSHEETS.COM

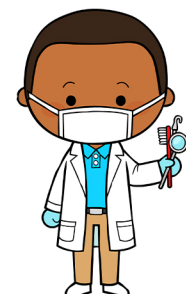
POSSESSIVE NOUNS



rabbit's

SUPERSTARWORKSHEETS.COM

POSSESSIVE NOUNS



dentist's

SUPERSTARWORKSHEETS.COM