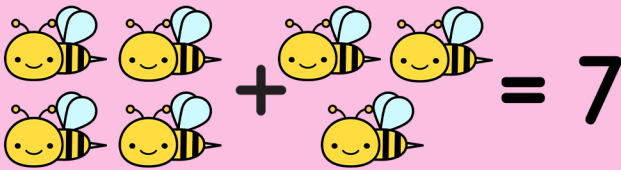


# SYMBOLS IN ACTION

## **+** Plus / Add

Meaning: Put numbers together

$$4 + 3 = 7$$



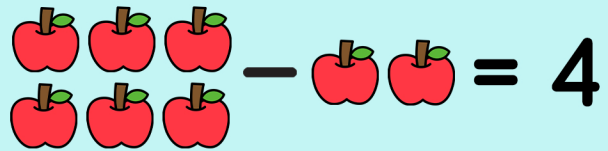
Four plus three equals seven

## **-** Subtraction

Meaning: Take away

$$6 - 2 = 4$$

Six minus two equals four



## **>** Greater Than

Meaning: Bigger value

Example:  $7 > 5$



Seven is greater than five

## **<** Less Than

Meaning: Smaller value

$$4 < 9$$

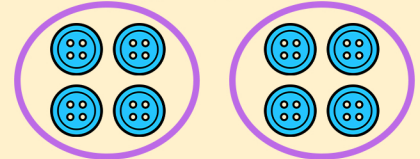


Four is less than nine

## **÷** Divide

Meaning: Split into equal groups

$$8 \div 2 = 4$$

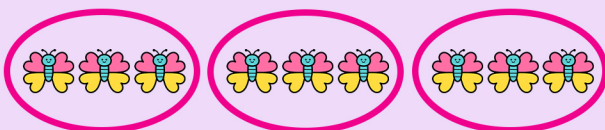


Eight divided by two equals four

## **×** Multiply

Meaning: Equal groups

$$3 \times 2 = 6$$

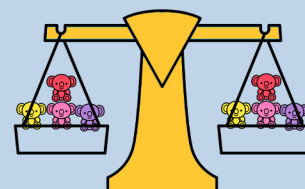


Three times two equals six

## **=** Equal

Meaning: Split into equal groups

$$8 \div 2 = 4$$



Eight divided by two equals four