

★ PARTS OF SPEECH ★

NOUN



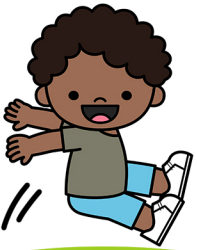
A noun is a person, place, thing, or idea.

PRONOUN



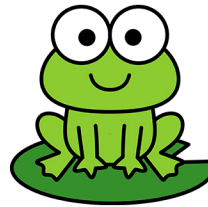
A pronoun is a word that is used in place of a noun.

VERB



A verb is an action word.

ADJECTIVE



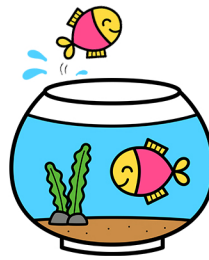
An adjective is a word that describes a noun.

ADVERB



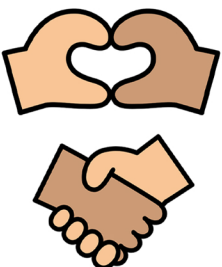
An adverb is a word that describes a verb.

PREPOSITION



A preposition is a word that tells where, when, or how.

CONJUNCTION



A conjunction is a word that joins words together.

INTERJECTION



An interjection is a word that shows strong feeling.